



SOUTH AUSTRALIAN ECONOMIC INDICATORS

EMBARGO: 11:30AM (CANBERRA TIME) THURS 20 DEC 2001

C O N T E N T S

	<i>page</i>
Notes	2
REVIEW	
Overview	3
Selected features	4
TABLES	
List of tables	5
Statistical summary	6
State summary	8
State accounts	9
International trade	10
Consumption and investment	14
Production	16
Consumer price index	20
Labour force and demography	21
Average weekly earnings	24
Financial markets	25
ADDITIONAL INFORMATION	
Publications source index	26

- For further information about these and related statistics, contact Treva Richards on Adelaide 08 8237 7338, or the National Information and Referral Service on 1300 135 070.

NOTES

FORTHCOMING ISSUES

<i>ISSUE</i>	<i>RELEASE DATE</i>
February 2002	1 February 2002
March 2002	1 March 2002
April 2002	2 April 2002
May 2002	1 May 2002
June 2002	3 June 2002
July 2002	1 July 2002

ABOUT THIS PUBLICATION

South Australian Economic Indicators is a monthly publication which contains the latest available data at the time of preparation for a range of statistical series that have been identified as indicators of economic activity in this State. In a number of cases the figures presented are preliminary and subject to revision in subsequent issues.

SYMBOLS AND OTHER USAGES

n.a.	not available
n.y.a.	not yet available
*	subject to sampling variability too high for most practical purposes
..	not applicable
0, 0.0	nil, or rounded to zero

ROUNDING

Where figures have been rounded, discrepancies may occur between sums of the component items and totals.

INFORMATION

All data are original, unless otherwise stated. More detailed information on each series, including explanatory and technical notes, can be obtained from other Australian Bureau of Statistics publications or alternative data sources. To assist those seeking further information, the series presented in the statistical and State summaries provides a reference to the Publication Source Index which is at the end of this publication.

Steve Crabb
Regional Director
South Australia

OVERVIEW

The data in this Overview are presented in trend terms, unless otherwise stated.

INTERNATIONAL TRADE

The value of South Australian merchandise exports in original terms for the month of October was \$839.7m. This was an increase of 12.4% on the value for September and an increase of 50.6% on October 2000.

The value of South Australian merchandise imports in original terms for the month of October was \$497.5m. This was a decrease of 5.7% from the value for September and an increase of 44.9% on October 2000.

CONSUMPTION AND INVESTMENT

South Australia's retail turnover increased by 11.4% over the 12 months to October. Retail turnover for October was \$1,042.1m.

There were 4,277 new motor vehicle registrations in October, a decline of 1.5% on October last year.

Private new capital expenditure in the June Quarter was \$590m, a decline of 12.1% on June Quarter 2000.

HOUSING

The number of dwelling units approved in October was 912, a rise of 73.7% on October last year.

CONSUMER PRICE INDEX

The Consumer Price Index (All Groups) for Adelaide increased by 0.1% to 135.3 in the September Quarter, and by 2.3% over the level recorded twelve months previously. The annual change is no longer affected by the direct or first round effects of The New Tax System, particularly the introduction of the goods and services tax.

LABOUR FORCE AND DEMOGRAPHY

The estimate of employed persons in South Australia rose to 677,500 in October but remains lower than the level of twelve months ago (680,100).

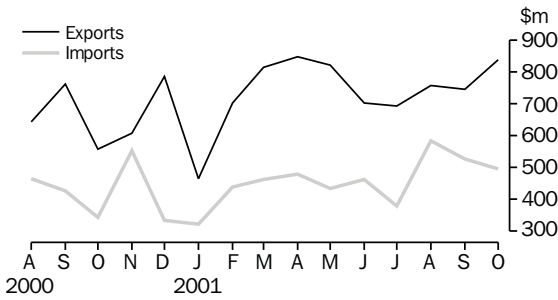
The unemployment rate for South Australia fell to 7.3% in October (from 7.4% in September).

FINANCIAL MARKETS

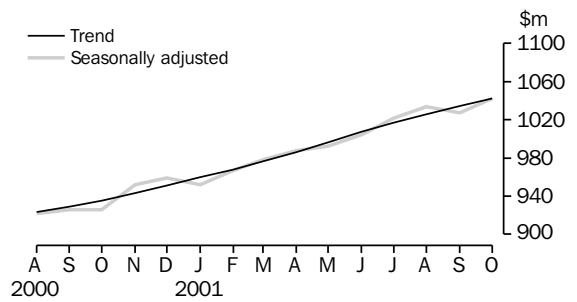
Total secured housing finance commitments (excluding alterations and additions) has continued to rise marginally to reach \$479.0m in September. This was a 1.3% increase on August and 28.8% higher than September 2000.

SELECTED FEATURES

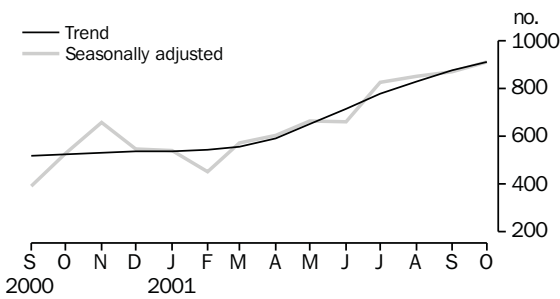
MERCHANDISE EXPORTS AND IMPORTS



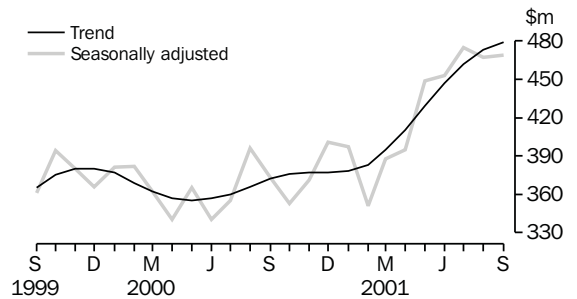
RETAIL TURNOVER



DWELLING UNITS APPROVED

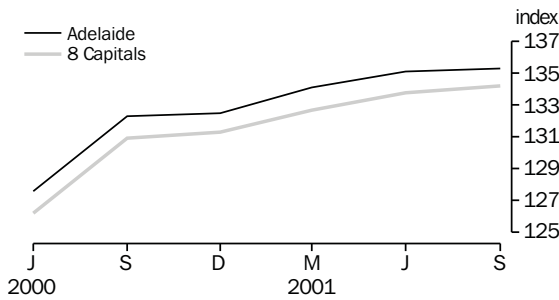


SECURED HOUSING FINANCE COMMITMENTS(a)

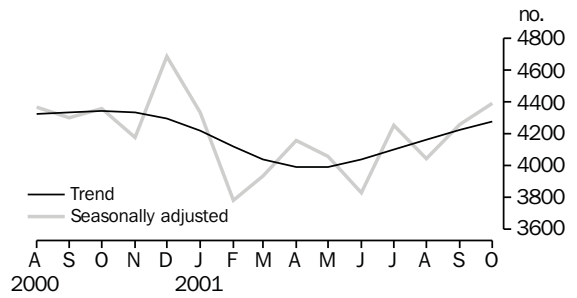


(a) Excludes alterations and additions. Includes refinancing.

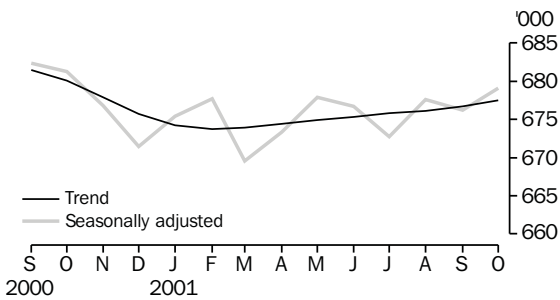
CONSUMER PRICE INDEX



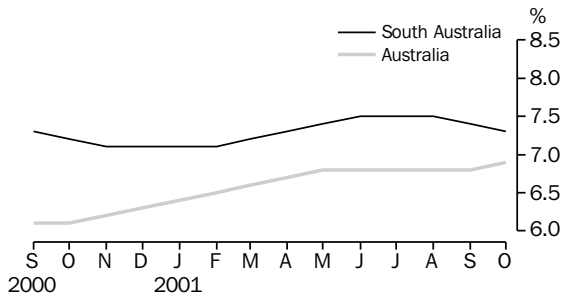
NEW MOTOR VEHICLE REGISTRATIONS



EMPLOYED PERSONS



UNEMPLOYMENT RATE—TREND



LIST OF TABLES

			Page
STATISTICAL SUMMARY	1	Statistical summary	6
	2	State summary	8
STATE ACCOUNTS	3	State accounts at current prices	9
	4	State accounts at chain volume measures	9
INTERNATIONAL TRADE	5	Merchandise exports, by selected commodity group	10
	6	Merchandise exports, by selected countries and country groups	11
	7	Merchandise exports, by industry of origin	12
	8	Merchandise imports, by selected commodity group	13
CONSUMPTION AND INVESTMENT	9	Turnover of retail establishments, by industry—trend	14
	10	New motor vehicle registrations, by type of vehicle	14
	11	Actual private new capital expenditure, by selected industry and type of asset	15
	12	Tourist accommodation	15
PRODUCTION	13	Building approvals	16
	14	Building commencements	17
	15	Value of building work done and completed during period	18
	16	Production, livestock products and selected commodities	19
CONSUMER PRICE INDEX	17	Consumer price index, by group—Adelaide	20
LABOUR FORCE AND DEMOGRAPHY	18	Estimated resident population and components of population change	21
	19	Births, deaths, marriages and divorces	21
	20	Civilian labour force status	22
	21	Civilian labour force, unemployment and participation rates	23
AVERAGE WEEKLY EARNINGS	22	Average weekly earnings of employees	24
FINANCIAL MARKETS	23	Secured housing finance commitments	25
	24	Finance commitments	25

Indicator	Period	South Australia			Australia			SA as a % of Aust.	Source index
		Number	% change from		Number	% change from			
			Previous period	Same period previous year		Previous period	Same period previous year		
State accounts									
Domestic final demand									
Current prices trend (\$m)	Sep qtr 01	11 958	1.3	5.4	172 117	1.3	4.4	6.9	(1)
Chain volume measures trend (\$m)	Sep qtr 01	11 351	0.8	2.4	163 494	1.1	1.9	6.9	(1)
Private final consumption expenditure									
Current prices trend (\$m)	Sep qtr 01	7 520	1.7	8.1	104 456	1.5	7.0	7.2	(1)
Chain volume measures trend (\$m)	Sep qtr 01	7 086	1.2	4.9	98 431	1.0	3.8	7.2	(1)
Private gross fixed capital formation									
Current prices trend (\$m)	Sep qtr 01	1 797	0.7	1.4	29 187	1.9	-1.1	6.2	(1)
Chain volume measures trend (\$m)	Sep qtr 01	1 706	-0.6	-0.2	28 121	2.7	-2.1	6.1	(1)
Compensation of employees									
Current prices trend (\$m)	Sep qtr 01	5 254	0.1	2.5	82 152	1.2	5.8	6.4	(1)
International accounts									
Exports (\$m)	Oct 01	839.7	12.4	50.6	10 328.9	3.5	2.3	8.1	(2)
Imports (\$m)	Oct 01	497.5	-5.7	44.9	11 554.4	19.2	3.6	4.3	(2)
Consumption and investment									
Retail turnover									
Current prices original (\$m)	Oct 01	1 043.7	5.3	12.0	13 933.8	6.1	9.4	7.5	(3)
Current prices trend (\$m)	Oct 01	1 042.1	0.7	11.4	13 767.7	0.4	8.4	7.6	(3)
Chain volume measures original (\$m)	Sep qtr 01	2 807.2	4.1	9.7	37 217.1	2.7	5.8	7.5	(3)
New motor vehicle registrations									
Original (no.)	Oct 01	4 360	12.8	2.8	66 726	14.2	0.7	6.5	(4)
Trend (no.)	Oct 01	4 277	1.3	-1.5	65 483	0.7	-5.0	6.5	(4)
Private new capital expenditure									
Current prices original (\$m)	Jun qtr 01	565	-4.2	-18.4	10 343	17.9	-9.0	5.5	(5)
Current prices trend (\$m)	Jun qtr 01	590	-9.4	-12.1	9 776	0.6	-5.4	6.0	(5)
Private new capital expenditure (\$m)	2000-01	2 654	8.3	8.3	39 491	-7	-7.0	6.7	(5)
Takings from accommodation—hotels, motels, guesthouses and serviced apartments	Jun qtr 01	52.1	-6.1	5.7	1 111.3	-8.8	6.9	4.7	(6)
Production									
Dwelling unit approvals									
Original (no.)	Oct 01	904	4.8	75.9	15 663	11.6	63.9	5.8	(7)
Trend (no.)	Oct 01	912	4.1	73.7	15 627	3.3	63.3	5.8	(7)
Dwelling units commenced (no.)	Jun qtr 01	1 646	3.1	-30.7	30 705	15.4	-28.3	5.4	(8)
Value of non-residential building approvals—trend (\$m)	Sep 01	60.1	-2.6	22.2	823.5	-5.1	-11.2	7.3	(7)
Value of total building activity									
Commenced (\$m)	Jun qtr 01	395.9	16.0	-15.6	8 606.2	10.8	-13.8	4.6	(8)
Work done (\$m)	Jun qtr 01	405.2	6.0	-23.6	8 511.8	10.4	-25.9	4.8	(8)
Work yet to be done (\$m)	Jun qtr 01	455.6	0.6	-8.2	12 203.6	3.8	0.5	3.7	(8)
Value of engineering construction work done (\$m)	Jun qtr 01	366.6	50.4	5.6	5 126.2	24.7	-0.2	7.2	(9)
Manufacturing production									
Red meat (tonnes)	Sep qtr 01	46 604	-12.9	-7.2	778 861	-1.6	-1.5	6.0	(11)
Mineral exploration expenditure (other than for petroleum)(a) (\$m)	Jun qtr 01	12.4	153.1	121.4	195.8	16.1	7.2	6.3	(12)

(a) From July 2000 value data no longer contains Wholesale Sales Tax.

Indicator	Period	South Australia			Australia			SA as a % of Aust.	Source index
		Number	% change from		Number	% change from			
			Previous period	Same period previous year		Previous period	Same period previous year		
Prices(a)									
CPI—All groups (index no.)	Sep qtr 01	135.3	0.1	2.3	134.2	0.3	2.5	..	(13)
Price index of materials used in house building (index no.)	Sep qtr 01	128.4	-0.8	-1.1	124.7	0.2	0.2	..	(14)
Price index of materials used in building other than houses (index no.)	Sep qtr 01	117.2	-0.2	1.0	117.5	0.3	1.7	..	(14)
Price index of established houses (index no.)	Sep qtr 01	140.7	3.1	10.3	167.7	5.2	14.0	..	(16)
Price index of project homes (index no.)	Sep qtr 01	144.9	1	2.3	136.4	0.7	1.6	..	(16)
Labour force and demography									
Population (resident at end qtr) ('000)	Mar qtr 01	1 501.4	0.1	0.3	19 334.2	0.3	1.2	7.8	(17)
Short-term overseas visitor arrivals (no.)	Jul 00	10 230	12.0	19.7	429 030	23.3	10.4	2.4	(21)
Short-term resident departures (no.)	Jul 00	18 630	28.6	6.1	296 940	-2.2	3.6	6.3	(21)
Labour force									
Original ('000)	Oct 01	731.1	-0.4	-0.2	9 864.7	-0.6	1.6	7.4	(18)
Trend ('000)	Oct 01	730.5	-0.1	-0.3	9 858.8	0.0	1.4	7.4	(18)
Employed persons									
Original ('000)	Oct 01	680.1	-0.2	-0.3	9 204.6	-0.5	0.6	7.4	(18)
Trend ('000)	Oct 01	677.5	0.0	-0.4	9 182.0	0.0	0.6	7.4	(18)
Participation rate									
Original(b) (%)	Oct 01	60.2	-0.3	-0.5	63.7	-0.5	0.2	..	(18)
Trend(b) (%)	Oct 01	60.2	0.0	-0.5	63.7	-0.1	0.1	..	(18)
Unemployment rate									
Original(b) (%)	Oct 01	7.0	-0.2	0.1	6.7	-0.1	1.0	..	(18)
Trend(b) (%)	Oct 01	7.3	-0.1	0.1	6.9	0.0	0.8	..	(18)
Job vacancies ('000)	Aug 01	6.2	12.7	17.0	92.7	11.2	-21.6	6.7	(19)
Industrial disputes ('000 working days lost)	Aug 01	8.1	211.5	8 000.0	40.4	-15.1	21.7	20.0	(20)
Income									
Average weekly earnings (full-time adults; ordinary time)									
Original (\$)	Aug 01	791.70	1.4	6.2	838.50	1.7	5.1	..	(22)
Trend (\$)	Aug 01	791.60	1.2	6.0	837.60	1.6	5.4	..	(22)
Wage cost index (total hourly rate excluding bonuses)(c) (index no.)	Sep qtr 01	112.6	0.9	3.2	113.6	1.1	3.6	..	(23)
Financial markets									
Secured housing finance(d) (\$m)	Sep 01	414.0	-9.0	19.3	7 300.0	-11.1	40.3	5.7	(24)
Finance commitments									
Personal (\$m)	Sep 01	263.7	-14.6	4.4	4 276.0	-11.1	6.4	6.2	(25)
Commercial (\$m)	Sep 01	515.5	-13.3	2.1	14 647.0	-11.1	0.3	3.5	(25)
Lease (\$m)	Sep 01	13.5	-13.5	-14.6	593.0	4.2	28.6	2.3	(25)
Interest rates(b)									
Banks new housing loans (%)	Oct 01	6.30	-0.25	-1.75	..	(26)
Bank loans—small, medium business(e) (%)	Oct 01	7.60	-0.20	-1.60	..	(26)
Bank loans—large business (%)	Oct 01	8.05	-0.25	-1.70	..	(26)
(a) Base year of each index 1989-90 = 100.									
(b) Change is shown in terms of percentage points.									
(c) Base year of index Sep 1997 = 100.									
(d) Excludes alterations and additions. Includes refinancing.									
(e) Rate for business loans over \$50,000.									

2

STATE SUMMARY

<i>Indicator</i>	<i>Period</i>	<i>NSW</i>	<i>Vic.</i>	<i>Qld</i>	SA	<i>WA</i>	<i>Tas.</i>	<i>NT</i>	<i>ACT</i>	<i>Source index</i>
SELECTED INDICATORS										
CPI—All groups(a) (index no.)	Sep qtr 01	135.4	133.6	134.2	135.3	131.5	132.8	132.5	133.2	(13)
Participation rate trend (%)	Oct 01	62.7	63.8	64.9	60.2	66.4	58.7	74.2	71.4	(18)
Unemployment rate trend (%)	Oct 01	6.4	6.5	8.0	7.3	6.9	9.2	8.0	4.6	(18)
Average weekly earnings (full-time adults; ordinary time) trend (\$)	Aug 01	889.10	815.60	779.30	791.60	841.10	764.60	824.70	951.00	(22)
SELECTED INDICATORS PER HEAD OF POPULATION(B)										
State final demand										
Chain volume measures trend (\$'000)	Sep qtr 01	8.6	8.4	8.0	7.6	8.5	7.1	9.9	16.2	(1)
Retail turnover										
Current prices original (\$)	Oct 01	732.3	703.7	716.3	695.2	740.8	617.7	760.8	927.2	(3)
Current prices, trend	Oct 01	729.1	691.8	705.0	694.1	719.3	615.6	722.2	925.7	(3)
New motor vehicle registrations trend (no. per '000 population)	Oct 01	3.3	3.7	3.6	2.8	3.1	2.6	3.0	3.5	(4)
Private new capital expenditure										
Current prices trend (\$)	Jun qtr 01	496.9	529.1	379.3	393.0	755.7	261.5	1 442.4	449.9	(5)
Dwelling unit approvals										
Original (no. per '000 population)	Oct 01	0.816	0.869	0.781	0.602	0.921	0.361	0.523	1.311	(7)
Trend (no. per '000 population)	Oct 01	0.729	0.974	0.774	0.607	0.959	0.366	0.462	0.785	(7)
Secured housing finance(c) (\$)	Sep 01	463.3	352.2	341.3	275.7	375.0	168.0	203.1	335.0	(24)
PERCENTAGE CHANGE FROM PREVIOUS PERIOD										
State final demand										
Chain volume measures trend (%)	Sep qtr 01	0.7	1.3	1.5	0.8	2.1	1.3	-0.6	0.9	(1)
Retail turnover										
Current prices original (%)	Oct 01	5.0	8.1	4.6	5.3	8.9	6.8	5.3	4.7	(3)
Current prices, trend	Oct 01	0.5	0.3	0.1	0.7	0.8	0.1	0.6	0.8	(3)
New motor vehicle registrations trend (%)	Oct 01	1.1	0.0	0.7	1.3	0.4	2.5	0.7	0.8	(4)
Private new capital expenditure										
Current prices trend (%)	Jun qtr 01	-3.7	1.6	-2.7	-9.4	7.2	-2.4	32.7	4.4	(5)
Dwelling unit approvals										
Original (%)	Oct 01	28.4	-1.4	-0.6	4.8	11.2	-10.5	37.3	287.7	(7)
Trend (%)	Oct 01	7.9	3.8	-1.1	4.1	1.3	3.0	-5.2	8.8	(7)
CPI—All groups (%)	Sep qtr 01	0.3	0.5	0.1	0.1	0.1	-0.4	0.2	-0.1	(13)
Participation rate trend(d) (%)	Oct 01	0.0	0.0	-0.1	0.0	-0.2	0.1	-0.2	-0.2	(18)
Unemployment rate trend(d) (%)	Oct 01	0.1	0.0	-0.1	-0.1	-0.1	0.0	0.2	-0.3	(18)
Average weekly earnings (full-time adults; ordinary time) trend (%)	Aug 01	2.3	1.7	1.2	1.2	0.8	1.3	0.4	0.9	(22)
Secured housing finance (%)	Sep 01	-11.8	-11.6	-7.4	-9.0	-14.4	-13.2	5.3	-8.7	(24)

(a) Base year of index 1989-90 = 100.

(b) The latest quarterly estimate of Australian resident population has been used to calculate ratios for subsequent periods.

(c) Excludes alterations and additions. Includes refinancing.

(d) Change is shown in terms of percentage points.

3

STATE ACCOUNTS AT CURRENT PRICES

Period	<i>Final consumption expenditure</i>		<i>Gross fixed capital formation</i>			State final demand	Gross State product	Compensation of employees
	Households	General government	Private	Public				
ANNUAL (\$m)								
1998-99	25 427	7 946	5 965	1 353	40 691	39 529	19 103	
1999-00	26 549	8 885	(a)10 012	(a)-1 437	44 009	41 340	19 956	
2000-01	28 782	9 111	8 216	147	46 257	43 194	20 899	
QUARTERLY, TREND (\$m)								
1999-00								
June	6 792	2 263	1 758	383	11 196	n.a.	5 067	
2000-01								
September	6 958	2 250	1 760	377	11 344	n.a.	5 127	
December	7 134	2 256	1 736	348	11 474	n.a.	5 186	
March	7 274	2 282	1 754	321	11 632	n.a.	5 229	
June	7 393	2 293	1 784	331	11 800	n.a.	5 249	
2001-02								
September	7 520	2 275	1 797	359	11 958	n.a.	5 254	

(a) The negative figure for Public gross fixed capital formation and the larger than usual positive figure for Private gross fixed capital formation are the result of the sale of the South Australian electrical transmission network in December quarter 1999. For more information see *National Income, Expenditure and Product, Australian National Accounts, June 2000* (Cat. no. 5206.0).

Source: *Australian National Accounts: Quarterly State Details* (Cat. no. 5206.0.40.001), and *Australian National Accounts: State Accounts* (Cat. no. 5220.0).

4

STATE ACCOUNTS AT CHAIN VOLUME MEASURES(a)

Period	<i>Final consumption expenditure</i>		<i>Gross fixed capital formation</i>			State final demand	Gross State product
	Households	General government	Private	Public			
ANNUAL (\$m)							
1998-99	25 816	8 331	6 127	1 338	41 729	40 931	
1999-00	26 549	8 885	(b)10 011	(b)-1437	44 009	41 340	
2000-01	27 512	8 946	7,976	127	44 562	41 617	
QUARTERLY, TREND (\$m)							
1999-00							
June	6 691	2 241	1 746	374	11 058	n.a.	
2000-01							
September	6 755	2 228	1 719	376	11 089	n.a.	
December	6 842	2 218	1 690	343	11 088	n.a.	
March	6 926	2 219	1 699	317	11 158	n.a.	
June	7 005	2 219	1 716	324	11 262	n.a.	
2001-02							
September	7 086	2 211	1 706	358	11 351	n.a.	

(a) Reference year for chain volume measures is 1999-2000.

(b) The negative figure for Public gross fixed capital formation and the larger than usual positive figure for Private gross fixed capital formation are the result of the sale of the South Australian electrical transmission network in December quarter 1999. For more information see *National Income, Expenditure and Product, Australian National Accounts, June 2000* (Cat. no. 5206.0).

Source: *Australian National Accounts: Quarterly State Details* (Cat. no. 5206.0.40.001), and *Australian National Accounts: State Accounts* (Cat. no. 5220.0).

5

MERCHANDISE EXPORTS, BY SELECTED COMMODITY GROUP(a)

<i>Period</i>	<i>Meat and meat preparations</i>	<i>Wheat</i>	<i>Wine</i>	<i>Wool and sheepskins (excl. wool tops)</i>	<i>Machinery</i>	<i>Metals and metal manufactures</i>	<i>Fish and crustaceans</i>	<i>Road vehicles, parts and accessories</i>	<i>Petroleum and petroleum products</i>	<i>Total(b)</i>
	\$'000	\$'000	\$'000	\$'000	\$'000	\$'000	\$'000	\$'000	\$'000	\$'000
1998-99	198 541	567 812	693 733	212 226	384 702	543 675	252 592	651 949	154 425	5 332 300
1999-00	160 483	473 086	899 348	179 716	353 205	805 744	394 375	883 792	218 466	6 188 231
2000-01	262 600	767 524	1 081 310	236 034	381 785	1 019 926	451 805	1 399 489	355 781	8 286 463
1999-00										
May	16 988	31 684	93 800	20 262	33 529	69 203	27 111	64 861	3 473	488 743
June	16 704	23 814	90 533	21 491	32 751	81 301	28 968	63 329	30 107	564 152
2000-01										
July	17 198	19 207	91 473	18 494	31 670	66 877	37 243	113 052	28 523	569 048
August	12 891	34 504	91 522	13 905	32 251	54 225	117 255	119 957	12 106	643 760
September	21 175	66 366	110 883	17 429	29 031	96 525	66 255	137 895	49 737	761 874
October	22 718	31 594	104 142	26 188	29 363	93 449	17 387	66 730	12 239	557 546
November	21 086	34 320	66 654	24 868	39 987	92 385	25 144	99 097	37 355	608 459
December	23 003	55 592	74 430	17 779	35 714	95 601	23 853	197 310	34 021	786 954
January	15 352	42 141	56 686	12 389	19 399	71 312	27 610	36 155	11 715	465 417
February	23 730	80 599	78 767	19 868	27 828	89 603	16 885	109 181	36 380	703 077
March	27 691	112 562	92 701	22 506	32 623	99 791	21 216	148 177	17 124	816 155
April	26 339	93 911	121 497	19 887	32 164	89 887	23 097	155 998	52 960	848 280
May	27 404	152 550	98 761	22 367	33 559	79 393	28 944	115 827	33 738	821 501
June	24 012	44 178	93 793	20 353	38 196	90 878	46 917	100 111	29 883	704 391
2001-02										
July	18 742	84 671	89 949	15 060	31 740	80 081	105 885	85 602	4 227	694 823
August	16 519	104 764	111 541	12 339	23 892	65 167	109 720	87 611	28 997	757 947
September	26 115	51 682	145 364	14 694	23 478	83 341	18 330	157 659	26 830	747 138
October	27 453	74 042	132 323	23 793	24 671	81 404	16 493	217 271	18 243	839 744

(a) Restrictions are placed on the release of statistics for certain commodities for reasons of confidentiality. These restrictions do not affect total export and import figures, but they can affect some items within commodity, industry and country tables. See *International Trade* (Cat. no. 5422.0), Explanatory Notes, paragraph 30, for more details.

(b) Includes other commodity groups not listed.

Source: ABS data available on request.

6

MERCHANDISE EXPORTS, BY SELECTED COUNTRIES AND COUNTRY GROUPS

Period	European Union					South-East and North-East Asia				
	United States of America	Middle East	United Kingdom	Total European Union	New Zealand	Japan	China	Hong Kong	ASEAN	Total
	\$'000	\$'000	\$'000	\$'000	\$'000	\$'000	\$'000	\$'000	\$'000	\$'000
1998-99	705 166	640 412	476 340	928 468	385 513	625 530	302 776	219 536	432 730	1 898 837
1999-00	954 681	724 871	625 154	1 073 928	446 026	787 295	315 199	255 679	492 304	2 297 913
2000-01	1 354 793	1 335 811	713 525	1 232 563	480 887	963 481	437 939	298 939	682 671	2 882 810
1999-00										
May	101 180	30 245	64 293	101 411	23 024	53 701	19 306	14 037	49 465	173 766
June	62 092	61 433	56 258	94 338	41 788	109 779	25 500	18 924	61 779	247 770
2000-01										
July	100 224	65 100	55 658	85 089	34 853	85 633	24 427	23 112	51 101	216 245
August	128 909	59 559	66 643	101 217	32 894	157 189	22 980	12 572	45 170	262 062
September	96 183	108 823	86 988	136 672	39 384	142 299	23 256	24 806	66 988	292 464
October	57 168	61 372	84 703	128 689	42 321	39 822	42 670	18 484	59 867	197 515
November	141 743	53 997	30 339	59 478	54 206	55 931	54 946	36 927	54 355	249 513
December	161 458	158 267	37 513	74 503	29 610	81 125	17 245	31 419	61 396	245 174
January	55 623	90 284	32 418	59 100	21 446	37 119	24 316	31 873	51 910	172 995
February	100 916	145 190	51 056	109 310	37 641	54 585	61 981	29 821	59 017	239 767
March	115 814	178 076	59 618	120 294	47 460	37 205	55 989	28 698	51 248	224 428
April	115 986	183 447	98 255	158 996	47 291	80 941	43 900	15 196	65 386	268 384
May	141 135	160 104	55 667	102 367	45 043	105 667	21 910	22 827	53 850	253 674
June	139 635	71 593	54 666	96 847	48 740	85 966	44 319	23 205	62 383	260 592
2001-02										
July	116 086	121 291	53 283	86 715	49 198	141 617	18 061	12 359	54 577	250 374
August	131 914	134 855	67 350	98 416	53 138	146 676	19 009	16 564	44 614	258 446
September	148 770	115 045	93 832	149 935	53 879	74 315	49 290	9 474	51 276	210 931
October	136 865	199 035	91 066	152 915	53 521	45 195	38 809	21 065	47 084	215 488

Source: ABS data available on request.

7

MERCHANDISE EXPORTS, BY INDUSTRY OF ORIGIN(a)

Period	Manufacturing								Total
	Agriculture, forestry and fishing(b)	Mining	Food, beverages and tobacco	Petroleum, coal, chemical associated product	Metal product	Machinery and equipment	Other manu- facturing	Other industries/ confidential	
	\$'000	\$'000	\$'000	\$'000	\$'000	\$'000	\$'000	\$'000	\$'000
1998-99	1 352 378	73 125	1 282 013	285 053	581 372	1 172 362	264 973	321 024	5 332 300
1999-00	934 944	135 461	1 517 721	369 480	837 235	1 412 721	256 771	723 899	6 188 231
2000-01	1 287 247	165 733	1 898 130	536 054	1 068 444	1 976 068	270 480	1 084 307	8 286 463
1999-00									
May	73 998	1 208	148 640	16 480	72 947	113 986	20 553	40 930	488 743
June	68 317	22 340	152 594	44 089	84 209	110 627	23 176	58 799	564 152
2000-01									
July	65 147	6 159	162 950	42 580	71 223	160 082	22 674	38 234	569 048
August	71 380	3 238	171 659	25 645	59 116	168 763	21 156	122 802	643 760
September	93 636	28 341	192 961	64 838	98 056	183 475	20 737	79 831	761 874
October	73 874	9 037	155 483	23 959	96 272	114 445	23 546	60 931	557 546
November	75 775	1 018	122 919	49 586	96 412	155 733	20 730	86 286	608 459
December	96 930	30 834	141 394	48 477	99 070	251 856	21 467	96 926	786 954
January	79 054	8 276	115 276	22 392	75 124	64 528	21 215	79 553	465 417
February	112 571	28 060	153 585	50 182	95 214	153 423	19 282	90 761	703 077
March	188 202	1 609	160 997	34 236	102 602	195 962	26 980	105 567	816 155
April	136 400	24 564	185 976	71 973	97 014	205 296	24 118	102 940	848 280
May	205 436	23 132	171 945	52 101	83 148	165 375	26 065	94 300	821 501
June	88 845	1 466	162 985	50 086	95 194	157 130	22 511	126 176	704 391
2001-02									
July	163 643	2 298	148 749	21 312	85 242	134 374	18 480	120 724	694 823
August	168 040	3 390	170 901	49 587	68 057	129 600	15 716	152 656	757 947
September	95 166	1 371	205 974	42 163	87 581	197 903	16 609	100 371	747 138
October	128 177	20 226	205 096	37 070	84 202	256 300	18 708	89 964	839 744

(a) Restrictions are placed on the release of statistics for certain commodities for reasons of confidentiality. These restrictions do not affect total export and import figures, but they can affect some items within commodity, industry and country tables. See *International Trade* (Cat. no. 5422.0), Explanatory Notes, paragraph 30, for more details.

(b) Bulk barley details are only included in this item for periods prior to September 1999. Due to confidentiality restrictions bulk barley is included in 'Other industries/confidential' from September 1999 onwards.

Source: ABS data available on request.

8

MERCHANDISE IMPORTS, BY SELECTED COMMODITY GROUP(a)

<i>Period</i>	<i>Food, beverages and tobacco</i>	<i>Petroleum and petroleum products</i>	<i>Chemicals</i>	<i>Textiles</i>	<i>Metals and metal manufactures</i>	<i>Machinery</i>	<i>Road vehicle parts and accessories</i>	<i>Other manufactured goods</i>	<i>Total(b)</i>
	\$'000	\$'000	\$'000	\$'000	\$'000	\$'000	\$'000	\$'000	\$'000
1998-99	162 784	271 492	281 097	96 052	264 732	917 879	812 096	765 643	3 716 152
1999-00	163 509	515 641	263 959	97 100	262 737	1 164 672	834 842	845 913	4 319 348
2000-01	183 196	968 428	284 227	97 281	315 907	1 205 016	854 759	926 825	5 045 141
1999-00									
May	12 970	150	26 399	8 829	25 235	103 045	93 658	89 393	376 376
June	13 173	81 962	25 199	8 426	24 025	116 514	82 365	70 038	437 101
2000-01									
July	12 672	12 429	15 366	7 477	27 313	81 141	88 021	64 441	323 578
August	15 478	105 525	18 815	10 427	31 299	84 295	85 147	100 451	466 221
September	14 607	112 111	16 617	7 996	26 072	92 650	69 757	74 871	426 734
October	19 561	20	16 312	9 911	29 337	100 090	77 594	76 202	343 395
November	19 530	186 246	16 133	7 366	30 389	107 265	79 920	84 173	552 576
December	13 166	42 077	15 344	6 399	20 145	102 436	58 572	62 099	333 906
January	12 558	16 440	24 436	6 950	27 734	97 647	47 013	71 387	321 682
February	11 456	123 599	22 811	8 947	22 891	89 394	59 947	78 042	438 399
March	14 957	82 612	36 950	6 792	24 140	110 739	77 516	87 106	462 244
April	15 533	99 678	57 548	7 239	25 625	104 946	71 621	75 171	478 988
May	16 160	77 698	29 168	9 156	23 837	117 562	67 744	73 174	435 103
June	17 518	109 994	14 728	8 622	27 124	116 851	71 909	79 708	462 314
2001-02									
July	14 737	27 393	19 654	7 575	28 991	99 408	74 738	89 614	378 669
August	19 403	139 771	19 498	10 687	29 850	139 734	98 097	111 202	584 482
September	17 961	177 219	19 528	7 683	25 943	104 454	68 422	92 552	527 830
October	23 538	64 019	19 988	9 093	33 638	159 658	82 346	91 423	497 547

(a) Restrictions are placed on the release of statistics for certain commodities for reasons of confidentiality. These restrictions do not affect total export and import figures, but they can affect some items within commodity, industry and country tables. See *International Trade* (Cat. no. 5422.0), Explanatory Notes, paragraph 30, for more details.

(b) Includes other commodity groups not listed.

Source: ABS data available on request.

9

TURNOVER OF RETAIL ESTABLISHMENTS, BY INDUSTRY—TREND

Period	Food retailing	Department stores	Clothing and soft good retailing	Household good retailing	Recreational good retailing	Other retailing	Hospitality and services	Total
	\$m	\$m	\$m	\$m	\$m	\$m	\$m	\$m
2000-01								
August	387.1	94.8	47.9	97.8	25.7	102.7	166.7	923.5
September	385.4	94.0	48.7	97.6	25.6	106.8	169.5	929.0
October	385.9	93.5	49.4	97.2	25.4	110.0	172.2	935.3
November	388.4	93.5	50.1	97.0	25.1	112.2	174.8	942.8
December	392.0	93.9	50.6	97.1	25.0	113.9	177.1	951.3
January	395.7	94.6	50.8	98.2	25.0	115.6	178.4	959.7
February	399.2	95.3	50.7	100.3	25.1	117.6	178.4	967.8
March	403.0	95.7	50.4	103.1	25.3	119.8	177.6	976.4
April	407.1	95.6	50.2	106.0	28.1	122.0	177.4	985.9
May	411.6	95.2	50.1	108.6	28.3	124.3	178.5	996.4
June	416.4	94.6	50.1	110.3	28.4	126.4	180.8	1 007.2
2001-02								
July	421.3	93.9	50.2	110.9	28.1	128.4	184.0	1 017.0
August	426.0	93.4	50.3	111.1	27.6	130.5	187.0	1 026.1
September	430.3	93.1	50.5	111.0	27.0	132.5	189.3	1 034.6
October	433.9	93.0	50.6	110.8	26.5	134.1	191.1	1 042.1

Source: Retail Trade, Australia (Cat. no. 8501.0).

10

NEW MOTOR VEHICLE REGISTRATIONS, BY TYPE OF VEHICLE

Period	Original			Seasonally adjusted			Trend estimate		
	Passenger vehicles	Other vehicles	Total	Passenger vehicles	Other vehicles	Total	Passenger vehicles	Other vehicles	Total
2000-01									
August	3 956	582	4 538	3 790	580	4 370	3 731	593	4 324
September	3 547	591	4 138	3 665	638	4 303	3 746	589	4 335
October	3 747	494	4 241	3 787	571	4 358	3 748	596	4 344
November	3 997	537	4 534	3 657	519	4 176	3 723	612	4 335
December	3 991	658	4 649	4 025	663	4 688	3 671	628	4 299
January	2 857	579	3 436	3 586	747	4 333	3 585	635	4 220
February	3 069	568	3 637	3 177	607	3 784	3 487	635	4 122
March	3 509	660	4 169	3 321	615	3 936	3 410	632	4 042
April	3 121	547	3 668	3 555	603	4 158	3 362	631	3 992
May	3 488	680	4 168	3 454	607	4 061	3 360	634	3 994
June	3 729	856	4 585	3 196	635	3 831	3 393	649	4 042
2001-02									
July	3 549	724	4 273	3 488	769	4 257	3 435	669	4 104
August	3 645	660	4 305	3 411	634	4 045	3 478	687	4 165
September	3 254	611	3 865	3 575	684	4 259	3 525	699	4 224
October	3 701	659	4 360	3 667	725	4 392	3 567	710	4 277

Source: New Motor Vehicle Registrations, Australia, Preliminary (Cat. no. 9301.0) and ABS data available on request.

11

ACTUAL PRIVATE NEW CAPITAL EXPENDITURE, BY SELECTED INDUSTRY AND TYPE OF ASSET

Period	Industry			Total	Type of asset	
	Mining	Manufacturing	Other selected industries		New buildings and structures	Equipment, plant and machinery
ANNUAL (\$m)						
1998-99	508	776	993	2 277	529	1 748
1999-00	242	853	1 355	2 451	619	1 832
2000-01	419	822	1 413	2 654	659	1 995
QUARTERLY, ORIGINAL (\$m)						
1999-00						
March	55	208	341	603	157	446
June	67	251	375	692	220	472
2000-01						
September	126	208	316	649	180	469
December	183	221	445	849	264	585
March	48	187	355	590	105	485
June	62	206	297	565	109	456
QUARTERLY, TREND (\$m)						
1999-00						
March	n.a.	n.a.	n.a.	617	165	452
June	n.a.	n.a.	n.a.	671	199	472
2000-01						
September	n.a.	n.a.	n.a.	722	214	508
December	n.a.	n.a.	n.a.	701	190	511
March	n.a.	n.a.	n.a.	651	149	502
June	n.a.	n.a.	n.a.	590	111	479

Source: State Estimates of Private New Capital Expenditure (Cat. no. 5646.0).

12

TOURIST ACCOMMODATION

Period	Licensed hotels with facilities				Motels and guesthouses				Serviced apartments			
	Estab-lish-ments	Guest rooms	Room occu-pancy	Takings	Estab-lish-ments	Guest rooms	Room occu-pancy	Takings	Estab-lish-ments	Guest rooms	Room occu-pancy	Takings
	no.	no.	%	\$'000	no.	no.	%	\$'000	no.	no.	%	\$'000
1998-99												
June	62	4 095	58.6	22 362	146	5 189	51.5	18 140	22	889	54.1	3 947
1999-00												
September	62	3 988	58.0	20 959	146	5 175	50.7	17 812	23	1 084	60.2	5 265
December	62	4 090	61.6	24 619	146	5 166	55.1	19 928	26	1 207	61.5	6 462
March	62	4 065	60.1	23 738	146	5 168	55.3	19 956	26	1 213	62.6	6 739
June	60	4 037	58.7	23 033	147	5 212	53.1	19 309	26	1 208	62.7	6 912
2000-01												
September	60	4 070	56.3	22 888	147	5 218	50.6	19 548	26	1 211	56.9	6 156
December	62	4 128	58.2	24 907	146	5 204	54.4	21 189	26	1 207	62.4	7 109
March	62	3 905	59.9	24 555	146	5 217	55.2	21 536	27	1 280	67.1	7 825
June	61	4 066	55.9	23 849	146	5 230	50.5	20 289	27	1 300	63.2	7 959

Source: Tourist Accommodation, Australia (Cat. no. 8635.0).

Period	Houses		Total dwelling units		New residential building \$m	Alterations and additions to residential building \$m	Total residential building \$m	Non-residential building \$m	Total building \$m
	Private sector	Total	Private sector	Total					
	no.	no.	no.	no.					
ANNUAL									
1998-99	6568	6777	7697	7928	775.6	144.0	919.6	670.9	1590.5
1999-00	8290	8392	9915	10024	1022.9	188.9	1211.8	585.7	1797.5
2000-01	5550	5639	6654	6770	735.6	157.3	892.9	728.5	1621.4
MONTHLY, ORIGINAL									
2000-01									
July	443	461	689	710	83.5	9.3	92.8	60.6	153.4
August	450	465	507	522	57.8	11.9	69.7	89.6	159.3
September	353	353	409	409	42.1	12.6	54.7	29.4	84.1
October	434	434	510	514	55.6	13.1	68.7	45.3	114.0
November	458	462	650	661	63.4	15.0	78.3	49.6	127.9
December	381	398	439	458	49.4	12.1	61.4	52.6	114.1
January	364	364	423	432	46.5	13.5	60.0	35.2	95.3
February	380	385	464	469	50.4	13.8	64.2	36.6	100.8
March	516	522	629	635	67.2	14.0	81.2	141.9	223.2
April	475	492	496	515	56.3	10.8	67.1	40.5	107.6
May	655	659	705	709	79.3	16.9	96.1	95.7	191.8
June	641	644	733	736	84.2	14.3	98.5	51.5	150.0
2001-02									
July	765	771	966	975	98.3	15.9	114.2	45.9	160.1
August	734	741	808	825	86.3	17.0	103.3	118.4	221.7
September	712	731	840	863	95.9	14.5	110.3	48.3	158.6
October	778	797	877	904	98.0	19.6	117.7	81.9	199.6
MONTHLY, TREND									
2000-01									
July	452	462	548	559	59.8	11.7	71.5	52.2	123.7
August	422	431	519	529	55.9	11.4	67.3	51.2	118.5
September	409	417	510	520	54.5	11.6	66.1	50.9	116.9
October	406	412	516	525	54.4	12.2	66.6	50.5	117.1
November	409	414	523	532	54.9	13.1	68.0	48.3	116.2
December	414	419	528	537	55.6	13.7	69.3	45.1	114.3
January	426	432	532	542	56.9	14.0	70.9	43.1	114.0
February	449	456	541	551	59.3	14.1	73.4	44.0	117.4
March	480	488	556	566	62.5	14.3	76.8	46.9	123.7
April	520	527	583	591	66.9	14.5	81.4	51.7	133.1
May	561	568	613	620	71.8	14.8	86.6	57.8	144.4
June	599	605	647	653	76.7	15.0	91.7	63.4	155.0
2001-02									
July	687	695	766	778	83.7	15.3	99.0	63.2	162.2
August	722	732	816	831	89.1	15.5	104.7	65.9	170.6
September	748	761	857	876	94.0	15.8	109.8	68.7	178.5
October	764	779	890	912	98.2	16.0	114.2	71.1	185.3

Source: Building Approvals, Australia (Cat. no. 8731.0) and ABS data available on request.

14

BUILDING COMMENCEMENTS

Period	New houses		Total dwelling units(a)		New residential building \$m	Alterations and additions to residential building \$m	Non-residential building		
	Private sector	Total	Private sector	Total			Private sector	Total	Total building
	no.	no.	no.	no.			\$m	\$m	\$m
1998-99	6,092	6,297	7,186	7,416	771.3	139.7	400.7	624.3	1535.3
1999-00	7,729	7,856	9,266	9,410	1044.8	198.8	351.2	576.8	1820.5
2000-01	5,317	5,404	6,460	6,574	780.1	161.4	387.7	580.0	1521.0
1998-99									
June	1,591	1,661	1,756	1,826	183.9	37.8	71.0	122.9	344.6
1999-00									
September	1,752	1,792	2,116	2,166	251.2	42.6	84.1	109.3	403.1
December	1,947	2,007	2,264	2,327	250.9	45.2	92.7	132.2	428.3
March	2,054	2,064	2,534	2,544	284.9	52.1	70.8	182.9	519.9
June	1,977	1,994	2,353	2,374	257.8	58.9	103.6	152.5	469.2
2000-01									
September	1,380	1,419	1,777	1,819	228.9	25.6	104.8	166.3	420.8
December	1,345	1,350	1,498	1,512	167.8	44.3	122.8	151.4	363.5
March	1,157	1,179	1,562	1,597	186.5	43.6	70.9	111.2	341.2
June	1,435	1,456	1,623	1,646	196.8	48.0	89.2	151.1	395.9

(a) Includes conversions.

Source: Building Activity, Australia (Cat. no. 8752.0).

VALUE OF BUILDING WORK DONE AND COMPLETED DURING PERIOD

Period	New houses		New residential building			Non-residential building		Total building		
	Private sector	Total	Private sector	Total	Alterations and additions to residential building	Total residential building	Private sector	Total	Private sector	Total
	\$m	\$m	\$m	\$m	\$m	\$m	\$m	\$m	\$m	\$m
VALUE OF BUILDING WORK DONE										
1998-99	599.4	614.6	720.8	737.7	147.7	885.4	417.1	571.6	1,283.8	1,457.0
1999-00	798.1	812.2	984.5	999.9	195.5	1,195.4	409.9	629.4	1,585.1	1,824.8
2000-01	679.7	686.9	834.6	844.1	162.1	1,006.2	392.5	617.3	1,382.1	1,623.5
1998-99										
June	154.7	158.9	189.9	194.4	34.4	228.9	72.6	117.2	296.2	346.1
1999-00										
September	166.8	171.9	212.6	218.4	41.3	259.8	116.7	171.6	369.4	431.3
December	187.5	192.0	227.3	232.1	46.8	278.9	101.0	149.2	374.3	428.1
March	193.0	196.1	239.4	242.6	47.2	289.9	86.3	145.3	372.4	435.2
June	250.8	252.2	305.1	306.8	60.1	366.9	105.9	163.3	469.1	530.2
2000-01										
September	175.9	178.2	228.3	230.7	30.9	261.5	84.0	138.2	341.8	399.7
December	179.6	180.9	216.0	218.3	42.1	260.4	116.6	176.1	372.9	436.5
March	162.6	164.0	193.8	195.7	40.7	236.4	97.2	145.7	330.1	382.1
June	161.6	163.9	196.4	199.5	48.4	247.9	94.7	157.1	337.4	405.2
VALUE OF BUILDING WORK COMPLETED										
1998-99	600.6	614.8	700.0	715.2	153.2	868.4	505.3	639.4	1,356.8	1,507.8
1999-00	713.5	730.1	867.6	886.2	191.9	1,078.1	362.9	538.4	1,419.4	1,616.4
2000-01	758.7	763.6	942.8	949.0	154.4	1,103.4	435.4	589.3	1,525.7	1,692.7
1998-99										
June	139.0	140.7	168.6	170.3	31.0	201.4	101.0	122.0	300.0	323.3
1999-00										
September	148.9	154.7	170.2	177.7	38.5	216.2	67.9	104.1	275.4	320.2
December	190.6	195.1	221.7	226.5	45.5	272.0	124.7	161.8	391.3	433.8
March	156.0	160.2	177.8	182.0	42.2	224.2	100.8	150.4	320.0	374.6
June	217.9	220.1	297.9	300.1	65.7	365.8	69.6	122.0	432.8	487.8
2000-01										
September	175.5	176.2	199.0	199.9	31.4	231.4	133.2	180.5	362.5	411.9
December	222.2	224.8	313.7	317.3	35.8	353.1	82.8	107.7	430.7	460.8
March	173.0	174.3	216.4	217.9	34.9	252.8	82.4	138.5	330.9	391.2
June	188.0	188.3	213.7	213.9	52.2	266.1	137.0	162.6	401.5	428.7

Source: Building Activity, Australia (Cat. no. 8752.0).

<i>Period</i>	<i>Pigmeat</i> <i>tonnes</i>	<i>Beef</i> <i>tonnes</i>	<i>Mutton</i> <i>tonnes</i>	<i>Lamb</i> <i>tonnes</i>	<i>Sawn timber(a)</i> <i>m³</i>
1998-99	30 864	62 266	48 029	44 173	374 590
1999-00	31 927	78 001	28 970	56 668	425 549
2000-01	36 679	82 532	36 104	61 893	n.y.a
1999-00					
September	7 294	17 107	5 654	11 492	111 075
December	7 504	18 401	8 714	11 944	93 802
March	8 245	21 743	8 810	14 475	112 949
June	8 884	20 750	5 792	18 757	107 723
2000-01					
September	8 227	18 011	8 072	15 785	126 440
December	8 143	21 982	9 826	15 689	89 486
March	9 785	23 367	9 885	14 968	75 558
June	10 524	19 172	8 321	15 451	n.y.a
2001-02					
September	10 274	18 271	6 290	11 694	n.y.a

(a) From Australian softwood logs only.

Source: *Livestock Products, Australia* (Cat. no. 7215.0) and ABS data available on request.

<i>Period</i>	<i>Food</i>	<i>Alcohol and tobacco</i>	<i>Clothing and footwear</i>	<i>Housing</i>	<i>House furnishings, supplies and services</i>	<i>Health</i>	<i>Transportation</i>	<i>Communication</i>	<i>Recreation</i>	<i>Education</i>	<i>Miscellaneous</i>	<i>All groups</i>
ANNUAL AVERAGE (1989-90 = 100.0)												
1998-99	127.7	171.8	105.0	92.0	113.3	176.0	121.6	101.9	117.9	204.8	142.7	123.2
1999-00	130.8	179.1	103.3	97.0	112.9	165.7	129.4	97.7	119.1	215.8	148.8	126.3
2000-01	136.7	198.3	111.9	104.3	117.1	169.5	138.0	104.7	122.9	225.9	159.3	133.5
QUARTERLY (1989-90 = 100.0)												
1999-00												
June	131.9	182.5	104.0	98.3	113.4	167.9	131.9	98.7	118.6	220.7	153.9	127.6
2000-01												
September	133.8	193.4	113.6	103.9	116.0	168.5	136.8	105.5	122.7	220.9	157.8	132.3
December	134.2	196.0	111.2	103.9	115.8	167.6	137.6	105.0	123.4	220.9	158.3	132.5
March	139.4	200.5	110.5	104.4	117.4	170.7	137.0	104.3	123.0	230.9	159.9	134.1
June	139.4	203.3	112.3	104.9	119.3	171.3	140.4	103.9	122.5	230.9	161.2	135.1
2001-02												
September	140.5	205.9	108.4	106.8	120.6	170.9	136.4	103.6	123.1	231.0	163.5	135.3
PERCENTAGE CHANGE FROM SAME QUARTER OF PREVIOUS YEAR												
1999-00												
June	2.4	5.3	-1.6	5.9	0.2	2.1	7.8	-1.3	-0.3	4.7	7.9	3.2
2000-01												
September	3.2	10.9	8.4	9.4	3.1	2.4	7.4	8.0	2.5	4.8	10.2	5.8
December	2.9	10.2	8.5	7.2	2.8	2.4	8.0	8.0	3.1	4.8	7.4	5.4
March	6.3	10.4	8.4	6.6	4.0	2.4	5.1	7.5	3.8	4.6	6.2	5.8
June	5.7	11.4	8.0	6.7	5.2	2.0	6.4	5.3	3.3	4.6	4.7	5.9
2001-02												
September	5.0	6.5	-4.6	2.8	4.0	1.4	-0.3	1.8	0.3	4.6	3.6	2.3
PERCENTAGE CHANGE FROM PREVIOUS QUARTER												
1999-00												
June	0.5	0.5	2.1	0.4	0.4	0.7	1.2	1.8	0.1	0.0	2.2	0.6
2000-01												
September	1.4	6.0	9.2	5.7	2.3	0.4	3.7	6.9	3.5	0.1	2.5	3.7
December	0.3	1.3	-2.1	0.0	-0.2	-0.5	0.6	-0.5	0.6	0.0	0.3	0.2
March	3.9	2.3	-0.6	0.5	1.4	1.8	-0.4	-0.7	-0.3	4.5	1.0	1.2
June	0.0	0.9	1.6	0.5	1.6	0.4	2.5	-0.4	-0.4	0.0	0.8	0.7
2001-02												
September	0.8	1.3	-3.4	1.8	1.1	-0.2	-2.8	-0.3	0.5	0.0	1.4	0.1

Source: Consumer Price Index (Cat. no. 6401.0).

18

ESTIMATED RESIDENT POPULATION AND COMPONENTS OF POPULATION CHANGE

Period	Net migration			Total increase	Population at end of period
	Natural increase	Interstate	Overseas(a)		
1997-98	6 602	-3 254	3 390	6 738	1 486 418
1998-99	6 751	-2 869	2 108	5 990	1 492 408
1999-00	6 306	-4 773	3 453	4 986	1 497 394
1998-99					
June	1 652	-864	229	1 017	1 492 408
1999-00					
September	1 419	-600	992	1 811	1 494 219
December	1 611	-1 291	1 643	1 963	1 496 182
March	1 828	-1 735	662	755	1 496 937
June	1 448	-1 147	156	457	1 497 394
2000-01					
September	1 121	-1 030	924	1 015	1 498 409
December	1 490	-1 308	1 660	1 842	1 500 251
March	1 740	-1 264	655	1 131	1 501 382

(a) Includes category jumping.

Source: Australian Demographic Statistics (Cat. no. 3101.0).

19

BIRTHS, DEATHS, MARRIAGES AND DIVORCES

Period	Registrations			
	Births	Deaths	Marriages	Divorces
1997-98	18 330	11 728	7 988	4 113
1998-99	18 399	11 648	8 034	4 191
1999-00	17 896	11 590	8 428	4 197
1998-99				
June	4 559	2 907	1 769	1 134
1999-00				
September	4 600	3 181	1 259	1 058
December	4 371	2 760	2 737	1 190
March	4 476	2 648	2 436	965
June	4 449	3 001	1 996	984
2000-01				
September	4 360	3 239	1 092	1 056
December	4 319	2 829	2 703	1 031
March	4 549	2 809	2 175	824

Source: Australian Demographic Statistics (Cat. no. 3101.0).

Period	Employed full-time		Employed part-time		Total employed		Unemployed		Labour force	
	Males	Females	Males	Females	Males	Females	Males	Females	Males	Females
ANNUAL AVERAGE ('000)										
1998-99	319.7	148.2	49.6	137.2	369.3	285.4	39.3	25.3	408.6	310.6
1999-00	322.1	152.5	56.1	142.3	378.2	294.9	34.6	23.9	412.8	318.7
2000-01	322.6	156.7	54.8	143.5	377.4	300.2	32.6	20.2	410.0	320.4
MONTHLY, ORIGINAL ('000)										
2000-01										
August	327.9	158.2	55.0	139.5	382.9	297.7	31.2	21.8	414.1	319.5
September	329.6	162.2	53.7	141.6	383.3	303.8	32.7	20.2	416.0	324.0
October	327.9	157.4	54.7	142.3	382.6	299.6	31.2	19.3	413.8	318.9
November	327.3	157.1	52.2	142.5	379.5	299.6	31.8	20.4	411.3	320.0
December	328.8	159.5	51.1	143.3	380.0	302.8	32.3	20.0	412.2	322.8
January	320.5	157.3	55.0	134.0	375.4	291.3	34.7	20.8	410.1	312.1
February	321.0	157.4	54.3	143.4	375.3	300.8	34.8	20.4	410.1	321.2
March	311.6	156.0	57.5	145.9	369.1	301.8	32.6	18.3	401.7	320.2
April	314.3	151.8	57.1	150.6	371.4	302.5	34.2	19.4	405.6	321.9
May	316.3	154.8	55.1	146.2	371.3	301.0	35.5	20.5	406.9	321.4
June	313.5	152.7	58.6	150.1	372.1	302.8	30.5	20.9	402.6	323.7
2001-02										
July	316.2	156.5	54.8	144.8	371.0	301.3	33.2	19.4	404.2	320.7
August	317.2	150.9	56.2	149.4	373.4	300.3	31.9	20.5	405.3	320.7
September	318.2	158.3	57.3	147.4	375.5	305.7	32.2	20.5	407.6	326.2
October	317.7	154.6	56.9	150.9	374.6	305.5	32.4	18.6	407.1	324.1
MONTHLY, TREND ('000)										
2000-01										
August	329.1	158.2	54.3	140.5	383.4	298.7	32.7	21.7	416.1	320.4
September	328.7	158.7	54.2	139.9	382.9	298.6	32.0	21.3	414.9	319.9
October	327.8	158.4	54.1	139.8	381.9	298.2	31.6	20.9	413.5	319.1
November	326.1	157.5	54.1	140.2	380.2	297.7	31.5	20.4	411.7	318.1
December	324.0	156.6	54.0	141.1	378.0	297.7	31.8	19.7	409.8	317.4
January	321.6	155.9	54.2	142.5	375.8	298.4	32.2	19.1	408.0	317.5
February	319.3	155.6	54.6	144.2	373.9	299.8	32.7	18.8	406.6	318.6
March	317.4	155.5	55.0	146.0	372.4	301.5	33.4	18.8	405.8	320.3
April	316.1	155.5	55.4	147.3	371.5	302.8	34.0	19.3	405.5	322.1
May	315.5	155.4	55.8	148.1	371.3	303.5	34.2	19.9	405.5	323.4
June	315.6	155.4	56.1	148.2	371.7	303.6	34.2	20.5	405.9	324.1
2001-02										
July	315.9	155.3	56.6	148.1	372.5	303.4	33.8	20.9	406.3	324.3
August	316.4	155.3	56.9	147.9	373.3	303.2	33.3	21.0	406.6	324.2
September	316.9	155.1	57.3	147.9	374.2	303.0	32.8	20.9	407.0	323.9
October	317.1	155.1	57.6	147.7	374.7	302.8	32.3	20.7	407.0	323.5

(a) Population aged 15 years and over.

Source: Labour Force, Australia, Preliminary (Cat. no. 6202.0).

21

CIVILIAN LABOUR FORCE, UNEMPLOYMENT AND PARTICIPATION RATES(a)

Period	Civilian population			Unemployment rate			Participation rate		
	Males aged 15 and over	Females aged 15 and over	Persons aged 15-19	Males all ages	Females all ages	Persons all ages	Males	Females	Persons
	'000	'000	%	%	%	%	%	%	%
ANNUAL AVERAGE									
1998-99	583.2	609.8	21.7	9.6	8.1	9.0	70.1	50.9	60.3
1999-00	587.6	613.8	20.9	8.4	7.5	8.0	70.3	51.9	60.9
2000-01	591.6	616.9	18.5	8.0	6.3	7.2	69.3	51.9	60.4
MONTHLY, ORIGINAL									
2000-01									
August	590.4	615.8	20.5	7.5	6.8	7.2	70.1	51.9	60.8
September	590.7	616.0	17.6	7.9	6.2	7.1	70.4	52.6	61.3
October	591.0	616.3	16.9	7.5	6.0	6.9	70.0	51.7	60.7
November	591.3	616.6	18.2	7.7	6.4	7.1	69.6	51.9	60.5
December	591.5	616.9	20.7	7.8	6.2	7.1	69.7	52.3	60.8
January	591.8	617.0	20.6	8.5	6.7	7.7	69.3	50.6	59.7
February	592.0	617.2	18.8	8.5	6.4	7.5	69.3	52.0	60.5
March	592.3	617.4	17.7	8.1	5.7	7.1	67.8	51.9	59.7
April	592.6	617.6	17.8	8.4	6.0	7.4	68.5	52.1	60.1
May	592.9	617.9	21.1	8.7	6.4	7.7	68.6	52.0	60.2
June	593.1	618.2	17.1	7.6	6.4	7.1	67.9	52.4	60.0
2001-02									
July	593.5	618.6	17.6	8.2	6.1	7.3	68.1	51.9	59.8
August	593.9	619.0	17.9	7.9	6.4	7.2	68.2	51.8	59.9
September	594.3	619.4	17.0	7.9	6.3	7.2	68.6	52.7	60.5
October	594.5	619.6	18.9	8.0	5.7	7.0	68.5	52.3	60.2
MONTHLY, TREND									
2000-01									
August	n.a.	n.a.	n.a.	7.9	6.8	7.4	70.5	52.0	61.1
September	n.a.	n.a.	n.a.	7.7	6.7	7.3	70.2	51.9	60.9
October	n.a.	n.a.	n.a.	7.6	6.6	7.2	70.0	51.8	60.7
November	n.a.	n.a.	n.a.	7.7	6.4	7.1	69.6	51.6	60.4
December	n.a.	n.a.	n.a.	7.8	6.2	7.1	69.3	51.5	60.2
January	n.a.	n.a.	n.a.	7.9	6.0	7.1	68.9	51.5	60.0
February	n.a.	n.a.	n.a.	8.1	5.9	7.1	68.7	51.6	60.0
March	n.a.	n.a.	n.a.	8.2	5.9	7.2	68.5	51.9	60.0
April	n.a.	n.a.	n.a.	8.4	6.0	7.3	68.4	52.1	60.1
May	n.a.	n.a.	n.a.	8.4	6.2	7.4	68.4	52.3	60.2
June	n.a.	n.a.	n.a.	8.4	6.3	7.5	68.4	52.4	60.3
2001-02									
July	n.a.	n.a.	n.a.	8.3	6.4	7.5	68.5	52.4	60.3
August	n.a.	n.a.	n.a.	8.2	6.5	7.4	68.5	52.4	60.3
September	n.a.	n.a.	n.a.	8.1	6.5	7.4	68.5	52.3	60.2
October	n.a.	n.a.	n.a.	7.9	6.4	7.3	68.5	52.2	60.2

(a) Population aged 15 years and over.

Source: Labour Force, Australia, Preliminary (Cat. no. 6202.0).

AVERAGE WEEKLY EARNINGS OF EMPLOYEES

Period	Males			Females			Persons		
	Full-time adult ordinary time earnings	Full-time adult total earnings	All males total earnings	Full-time adult ordinary time earnings	Full-time adult total earnings	All females total earnings	Full-time adult ordinary time earnings	Full-time adult total earnings	All employees total earnings
ANNUAL AVERAGE (\$ per week)									
1998-99	741.20	797.60	678.30	627.90	647.30	464.40	699.10	741.70	575.20
1999-00	756.80	812.50	695.00	641.70	663.30	457.20	714.40	757.50	575.90
2000-01	811.30	864.40	746.80	685.20	703.90	491.20	765.70	806.40	619.70
QUARTERLY, ORIGINAL (\$ per week)									
1999-00									
May	770.40	831.30	705.00	651.40	677.20	462.60	726.80	774.80	585.90
2000-01									
August	791.60	846.00	724.80	667.70	692.60	484.00	745.50	788.90	603.60
November	814.90	866.00	748.30	681.40	698.00	488.30	766.40	805.00	618.50
February	813.80	870.60	754.70	693.60	710.60	499.30	770.10	812.40	627.70
May	824.80	875.00	759.10	698.00	714.20	493.00	780.90	819.30	628.90
2001-02									
August	832.60	875.90	771.20	714.50	727.10	513.00	791.70	824.30	644.50
QUARTERLY, TREND (\$ per week)									
1999-00									
May	776.70	834.20	713.10	654.70	676.20	468.20	731.60	775.50	590.70
2000-01									
August	793.00	848.50	727.40	667.90	689.70	480.20	746.70	789.90	604.20
November	807.10	860.80	742.10	679.80	699.60	488.90	760.50	802.10	616.10
February	817.30	869.80	752.80	690.60	707.50	494.60	772.00	811.70	624.80
May	824.90	876.10	762.10	702.30	717.80	500.80	782.00	820.20	633.20
2001-02									
August	831.40	880.60	771.90	715.20	729.60	509.20	791.60	828.20	642.80

Source: Average Weekly Earnings, States and Australia (Cat. no. 6302.0).

23

SECURED HOUSING FINANCE COMMITMENTS(a)

Period	Original		Seasonally adjusted		Trend	
	Dwelling units	Value	Dwelling units	Value	Dwelling units	Value
	no.	\$m	no.	\$m	no.	\$m
2000-01						
July	3 537	332	3 747	355	3 719	360
August	4 079	383	4 176	396	3 834	366
September	3 704	347	3 968	373	3 926	372
October	3 717	351	3 812	353	3 965	376
November	4 163	406	3 847	371	3 939	377
December	3 921	395	4 071	401	3 876	377
January	3 511	356	3 960	397	3 810	378
February	3 565	351	3 558	351	3 789	383
March	4 119	423	3 746	388	3 824	395
April	3 645	382	3 731	395	3 910	410
May	4 522	479	4 287	449	4 037	429
June	4 321	458	4 115	453	4 175	447
2001-02						
July	4 290	462	4 411	475	4 289	462
August	4 324	455	4 370	467	4 378	473
September	3 849	414	4 338	469	4 429	479

(a) Excludes alterations and additions. Includes refinancing.

Source: Housing Finance for Owner Occupation, Australia (Cat. no. 5609.0).

24

FINANCE COMMITMENTS

Period	Commercial finance commitments			Personal finance commitments			
	Fixed loan facilities	Revolving credit facilities	Total commercial finance commitments	Fixed loan facilities	Revolving credit facilities	Total personal finance commitments	Total lease finance commitments
	\$m	\$m	\$m	\$m	\$m	\$m	\$m
2000-01							
July	339.5	256.5	596.0	112.8	147.0	259.8	9.8
August	249.2	163.0	412.3	141.9	162.6	304.5	10.1
September	235.4	269.6	505.0	131.6	121.0	252.6	15.8
October	247.0	150.7	397.7	126.0	122.6	248.6	9.4
November	287.3	254.6	541.9	149.5	163.5	312.9	13.6
December	329.6	394.5	724.1	138.0	148.1	286.0	14.4
January	234.2	164.6	398.9	136.1	129.1	265.2	7.7
February	284.4	292.7	577.1	137.5	111.5	249.0	15.2
March	321.3	278.2	599.5	164.8	147.1	311.9	13.7
April	262.6	295.6	558.2	133.7	108.6	242.4	11.2
May	376.4	186.8	563.2	162.5	144.9	307.4	7.7
June	524.6	375.8	900.5	165.3	168.5	333.8	19.1
2001-02							
July	373.9	260.2	634.1	150.7	169.7	320.4	28.7
August	374.2	220.1	594.3	165.4	143.6	308.9	15.6
September	293.2	222.3	515.5	136.5	127.2	263.7	13.5

Source: ABS data available on request.

PUBLICATIONS SOURCE INDEX

- (1) *Australian National Accounts, Quarterly State Details*
(Cat. no. 5206.0.40.001)
- (2) International Merchandise Trade, ABS data available on request
- (3) *Retail Trade, Australia* (Cat. no. 8501.0) Monthly
- (4) *New Motor Vehicles Registrations, Australia, Preliminary*
(Cat. no. 9301.0) Monthly
- (5) *State Estimates of Private New Capital Expenditure*
(Cat. no. 5646.0) Quarterly
- (6) *Tourist Accommodation, Australia* (Cat. no. 8635.0) Quarterly
- (7) *Building Approvals, Australia* (Cat. no. 8731.0) Monthly
- (8) *Building Activity, Australia* (Cat. no. 8752.0) Quarterly
- (9) *Engineering Construction Activity, Australia*
(Cat. no. 8762.0) Quarterly
- (10) *Manufacturing Production, Australia, Preliminary*
(Cat. no. 8301.0) Quarterly
- (11) *Livestock Products, Australia* (Cat. no. 7215.0) Quarterly
- (12) *Actual and Expected Private Mineral Exploration, Australia*
(Cat. no. 8412.0) Quarterly
- (13) *Consumer Price Index* (Cat. no. 6401.0) Quarterly
- (14) *Producer Price Indexes* (Cat. no. 6427.0) Quarterly
- (16) *House Price Indexes: Eight Capital Cities*
(Cat. no. 6416.0) Quarterly
- (17) *Australian Demographic Statistics* (Cat. no. 3101.0) Quarterly
- (18) *Labour Force, Australia, Preliminary* (Cat. no. 6202.0) Monthly
- (19) *Job Vacancies, Australia* (Cat. no. 6354.0) Quarterly
- (20) *Industrial Disputes, Australia* (Cat. no. 6321.0) Monthly
- (21) Overseas arrival and departure statistics
- (22) *Average Weekly Earnings, States and Australia*
(Cat. no. 6302.0) Quarterly
- (23) *Wage Cost Index, Australia* (Cat. no. 6345.0) Quarterly
- (24) *Housing Finance for Owner Occupation, Australia*
(Cat. no. 5609.0) Monthly
- (25) *Lending Finance, Australia* (Cat. no. 5671.0) Monthly—and ABS
data available on request
- (26) *Reserve Bank of Australia Bulletin*

FOR MORE INFORMATION...

- INTERNET* **www.abs.gov.au** the ABS web site is the best place to start for access to summary data from our latest publications, information about the ABS, advice about upcoming releases, our catalogue, and Australia Now—a statistical profile.
- LIBRARY* A range of ABS publications is available from public and tertiary libraries Australia-wide. Contact your nearest library to determine whether it has the ABS statistics you require, or visit our web site for a list of libraries.
- CPI INFOLINE* For current and historical Consumer Price Index data, call 1902 981 074 (call cost 77c per minute).
- DIAL-A-STATISTIC* For the latest figures for National Accounts, Balance of Payments, Labour Force, Average Weekly Earnings, Estimated Resident Population and the Consumer Price Index call 1900 986 400 (call cost 77c per minute).

INFORMATION SERVICE

Data which have been published and can be provided within five minutes are free of charge. Our information consultants can also help you to access the full range of ABS information—ABS user-pays services can be tailored to your needs, time frame and budget. Publications may be purchased. Specialists are on hand to help you with analytical or methodological advice.

- PHONE* **1300 135 070**
- EMAIL* **client.services@abs.gov.au**
- FAX* 1300 135 211
- POST* Client Services, ABS, GPO Box 796, Sydney 1041

WHY NOT SUBSCRIBE?

ABS subscription services provide regular, convenient and prompt deliveries of ABS publications and products as they are released. Email delivery of monthly and quarterly publications is available.

- PHONE* 1300 366 323
- EMAIL* subscriptions@abs.gov.au
- FAX* 03 9615 7848
- POST* Subscription Services, ABS, GPO Box 2796Y, Melbourne 3001



2130740001024
ISSN 1039-8880

RRP \$19.00